

Transportation Management Associations or TMAs

Who We Are and What We Do

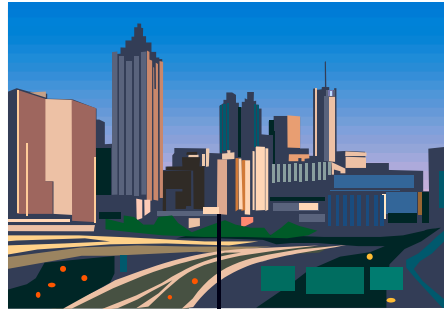
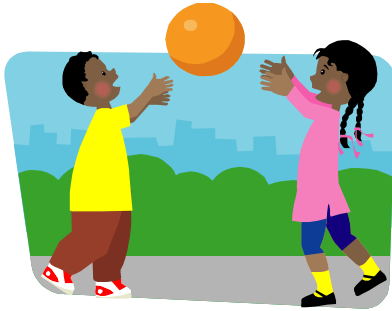


If Transportation is the
Ugly Step Sister



Then The TMAs can be
your Fairy Godmother

Linking All Facets of Our Lives



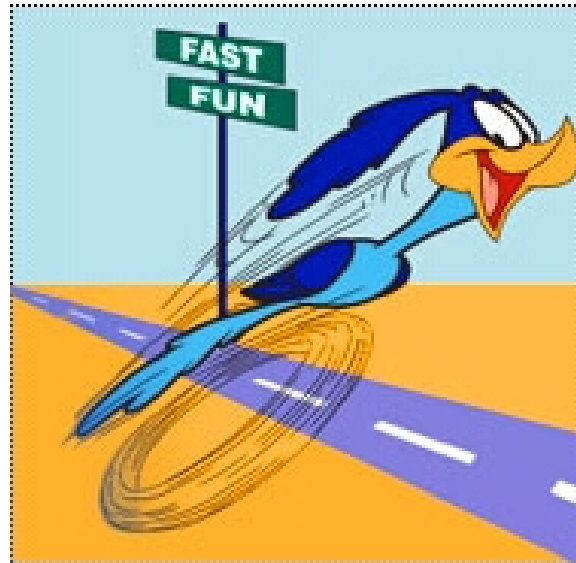
The History Behind TMAs



Who Pays For This?



How About Some Quick Examples of What TMAs Can Do



Challenge #1 – There are large portions of Montgomery County that have no transit access

Solution – Working with several private and public partners, begin operation of a small fixed route bus system, circulator system or last mile connector shuttles



Challenge #2 - Traffic Congestion

Solution: Coordinate road construction and detours between municipalities



Challenge #3 – Alerting Our Membership and the Community About Non-Reoccurring Traffic Congestion



Challenge #4 – Increase a healthy lifestyle by encouraging biking and walking

Solutions: Bike Share Programs

Pedestrian Safety Classes

Testimony and Support Letters for Zoning and Livable Community Issues



Challenge #5 – Employees can not access their jobs without a car

Solution: Promote programs that encourage people to use alternative modes of transportation



Carpool
Vanpool



Transit Programs such as RideEco and
Emergency Ride Home

Avoiding Disaster



It's Never too Early to Plan for Transportation



Airport Corridor Transportation Association (ACTA) 412-533-4600

Transportation Management Association Bucks (TMA Bucks) 215-244-9082

Central Philadelphia TMA (CPTMA)

Transportation Management Association of Chester County (TMACC)

610-993-0911

Delaware County Transportation Management Association (DCTMA) 610-892-9440

Oakland Transportation Management Association (OTMA) 412-687-4505

Partnership Transportation Management Association of Montgomery County (PTMA)

215-997-9100

Pittsburgh Downtown Partnership Transportation Management Association

(412-566-4190)

Greater Valley Forge Transportation Management Association (GVFTMA)

610-354-8899

